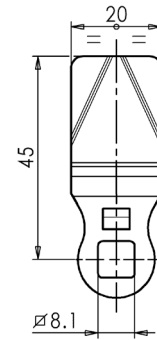
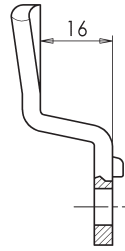


# LEVE ACCIAIO

## STEEL CAMS

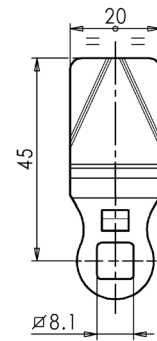


Cod.

Piega - Crank

Materiale - Material

002086ZB

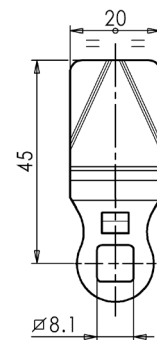
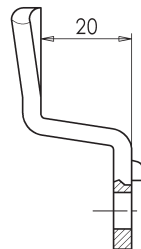
Piega positiva 16 mm  
Plus 16 mm offsetAcciaio zincato  
Zinc-plated steel

Cod.

Piega - Crank

Materiale - Material

002087ZB

Piega positiva 18 mm  
Plus 18 mm offsetAcciaio zincato  
Zinc-plated steel

Cod.

Piega - Crank

Materiale - Material

002088ZB

Piega positiva 20 mm  
Plus 20 mm offsetAcciaio zincato  
Zinc-plated steel