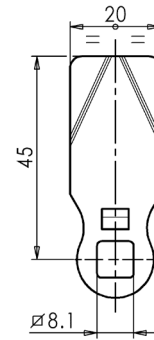
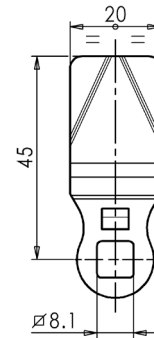


LEVE ACCIAIO

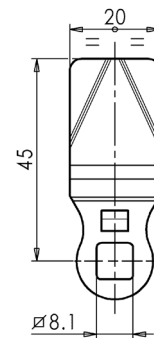
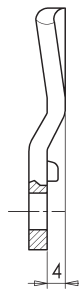
STEEL CAMS



Cod.	Versione - Version	Materiale - Material
002075ZB	Leva piana Straight cam	Acciaio zincato Zinc-plated steel
002052	Leva piana Straight cam	Acciaio inox Stainless steel



Cod.	Piega - Crank	Materiale - Material
002074ZB	Piega negativa 2 mm Minus 2 mm offset	Acciaio zincato Zinc-plated steel



Cod.	Piega - Crank	Materiale - Material
002078ZB	Piega negativa 4 mm Minus 4 mm offset	Acciaio zincato Zinc-plated steel